



RFE MAKING
BROADCAST
SMARTER

COSMIC™ Audio Processor

COSMIC™ is the new audio processor made by RFE.

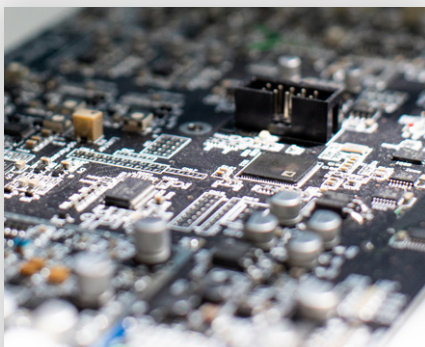
COSMIC™ uses DSP microprocessor in order to obtain a new level of audio quality. DSP is a special microprocessor used in many different audio applications to execute complex algorithms. The DSP microprocessor allows the digital processing of the audio signal.

This hardware component will be included as a standard feature in our FM Transmitters, for audio signal acquisition and stereo signal generation [A/D and D/A acquisition and conversion]. This means higher audio quality and less distortion.

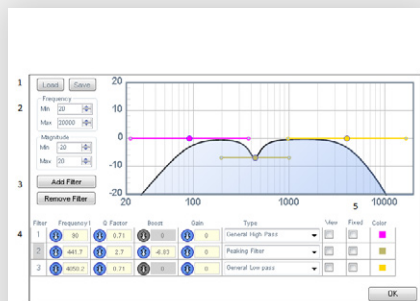
In addition, FM Transmitters can be equipped with some optional “audio treatment algorithms” for the audio processing, with the following effects:

- **AMC [Automatic Modulation Control]:** the average deviation value is kept constant within the preset limits, in order to avoid annoying “over-modulation” peaks;
- **SFP [Selectable Filter Profile]:** through a drop-down menu you can select 6 preset audio equalization profiles (Bass Enhanced, HI Lift, Speech, Pop, Rock, Club).

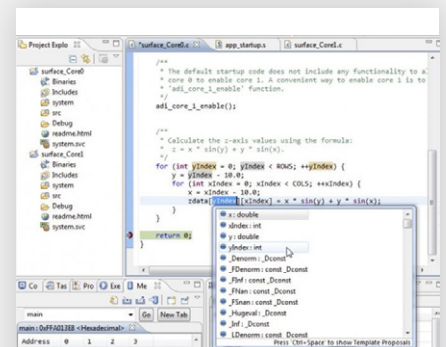
Contact us to find out more!



DSP Hardware



Analysis



Code Development

