



RFE

MAKING
BROADCAST
SMARTER

COSMIC™ Audio Processor

COSMIC™ is the new audio processor made by RFE.

COSMIC™ uses DSP microprocessor in order to obtain a new level of audio quality. DSP is a special microprocessor used in many different audio applications to execute complex algorithms. The DSP microprocessor allows the digital processing of the audio signal.

This hardware component will be included as a standard feature in our FM Transmitters, for audio signal acquisition and stereo signal generation [A/D and D/A acquisition and conversion]. This means higher audio quality and less distortion.

In addition, FM Transmitters can be equipped with some optional “audio treatment algorithms” for the audio processing, with the following effects:

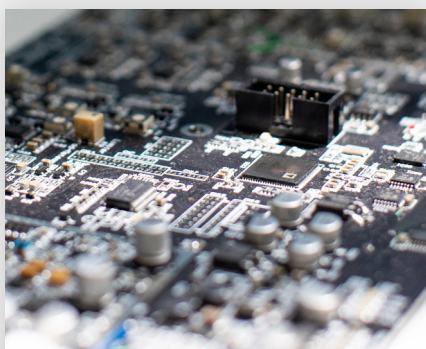


AMC [Automatic Modulation Control]: the average deviation value is kept constant within the preset limits, in order to avoid annoying “over-modulation” peaks;

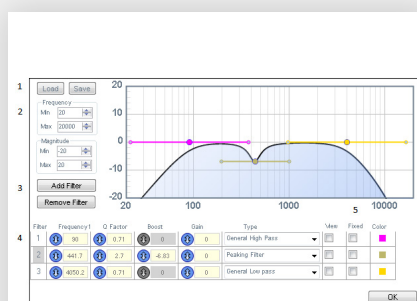


SFP [Selectable Filter Profile]: through a drop-down menu you can select 4 preset audio equalization profiles (Bass Enhancer, Hi Lift, Crystal Voice, Club).

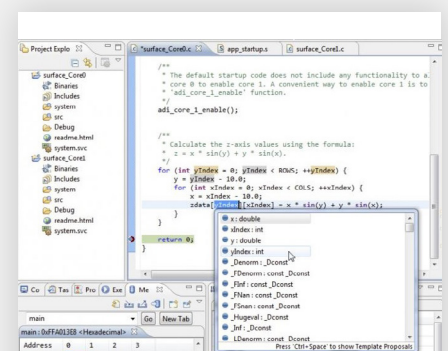
Contact us to find out more!



DSP Hardware



Analysis



Code Development

